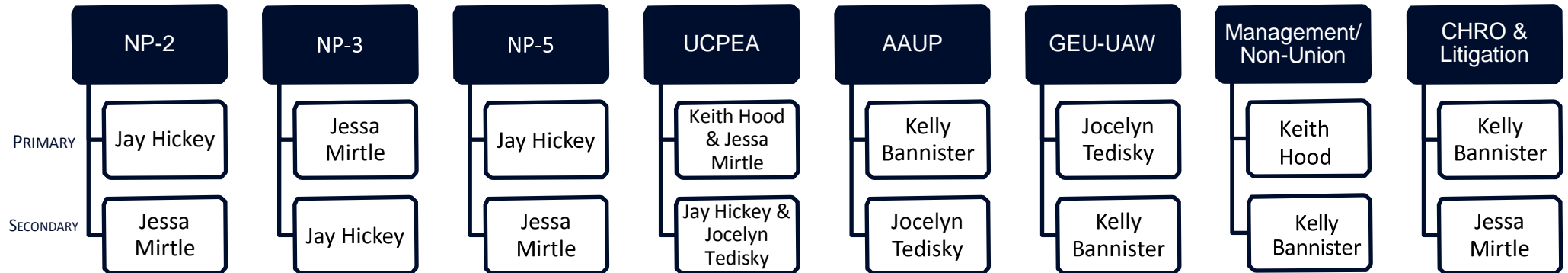


UConn

OFFICE OF FACULTY & STAFF LABOR RELATIONS

BARGAINING UNIT ASSIGNMENTS

Matters and issues requiring the involvement of a labor relations professional are generally assigned in accordance with the relevant collective bargaining agreement. Bargaining unit assignments for LR professionals are provided below:



- | | | |
|----------------------|---|---|
| NP-2 | Connecticut Employees Union Independent (CEUI) | Maintenance Personnel |
| NP-3 | American Federation of State, County and Municipal Employees (AFSCME) | Administrative Clerical Personnel |
| NP-5 | Connecticut Police & Fire Union (CPFU) | Public Safety Personnel |
| UCPEA | University of Connecticut Professional Employees Association | Non-Teaching Professionals |
| AAUP | American Association of University Professors | Faculty, Coaches, and other Academic Personnel |
| GEU-UAW | Graduate Employee Union | Graduate Assistants, Teaching Assistants, Research Assistants |
| Management/Non-Union | Non-unionized administrators and confidential personnel | |