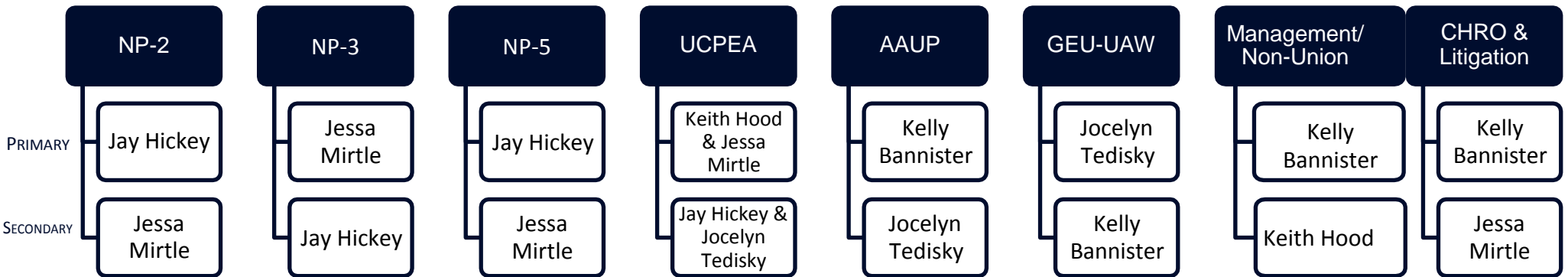


UConn

OFFICE OF FACULTY & STAFF LABOR RELATIONS

BARGAINING UNIT ASSIGNMENTS

Matters and issues requiring the involvement of a labor relations professional are generally assigned in accordance with the relevant collective bargaining agreement. Bargaining unit assignments for LR professionals are provided below:



NP-2	Connecticut Employees Union Independent (CEUI)	Maintenance Personnel
NP-3	American Federation of State, County and Municipal Employees (AFSCME)	Administrative Clerical Personnel
NP-5	Connecticut Police & Fire Union (CPFU)	Public Safety Personnel
UCPEA	University of Connecticut Professional Employees Association	Non-Teaching Professionals
AAUP	American Association of University Professors	Faculty, Coaches, and other Academic Personnel
GEU-UAW	Graduate Employee Union	Graduate Assistants, Teaching Assistants, Research Assistants
Management/Non-Union	Non-unionized administrators and confidential personnel	